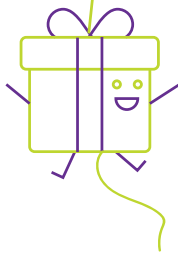
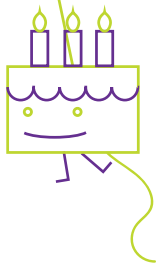


# LET'S PARTY!



**HEY!**

---

**IT'S PARTY TIME FOR:**

---

**WHERE:** Clip 'n Climb 6 - 8 Industrial Way, Cowes

---

**WHEN:**

---

**TIME:**

---

**RSVP:**

---

**EMAIL:**

---

**PLEASE REMEMBER TO WEAR  
RUNNERS (NO OPEN TOES) AND  
COMFY CLIMBING CLOTHES.**

All climbers will need a waiver signed by a parent/guardian prior to the party. To sign the waiver, go to [islandclipnclimb.com.au](http://islandclipnclimb.com.au) ("sign a waiver" is located at top right corner of website). Nothing needs to be printed - it's all saved online.

**CLIP 'N CLIMB PHILLIP ISLAND**  
6 - 8 Industrial Way,  
Cowes VIC 3922  
Telephone: 03 5952 6780  
[islandclipnclimb.com.au](http://islandclipnclimb.com.au).